

Photo Courtesy of Laura Heffner

### Page 3 50 Great Years!

We want to take an opportunity to thank **EVERYONE** for their support over this year and for celebrating our 50th anniversary with us.

### Page 8 Friends of the Parks

These 2022 Friends of the Park memberships made additional programs, events, supplies, equipment, and exhibits possible.

### Page 11 Nature Photo Contest

2022 Nature Photography Winners announced!

# Director's Corner

Festival since 2018 at the Lauer Historical Farm, a new and refreshing location.

## Director

Tyler Black

## Board of Commissioners

Robert K. Antibus

Kevin P. Bruin

Donna M Creamer

## Office Hours

Monday - Friday  
8:00 a.m. to 4:30 p.m.

## TABLE OF CONTENTS

	Page
Director's Corner	2
Thank You For 50 Great Years	3
Thank You Apple Festival Sponsors	3
50 Mile Challenge	4
Volunteering Opportunities	4
Winter Programs	5-7
Scouting Programs	7
Park Volunteers Honored	8
Donations	8
Friends of the Parks Membership	8
2022 Friends of the Parks	9
Naturalist Notebook - "Partnerships"	10
2022 Nature Photo Contest Winners	11



Tyler Black - Director

## Year in Review and Looking Ahead

Winter is always a great time to reflect on the accomplishments of the past year and to look ahead on what is to come. This year is no different! I am so proud of our staff and the commitment they have in making the parks the best they can be for everyone in Allen County. I am thankful for the support that our volunteers have given us over this busy year, whether it be helping with programs, to helping with our 50<sup>th</sup> anniversary celebration, or helping with Apple Festival. We couldn't do all the things we do without the support of volunteers. Lastly, I am very thankful for the support we have been given throughout the community. It shows that parks in Allen County are an important part of our community, and they mean something to everyone.

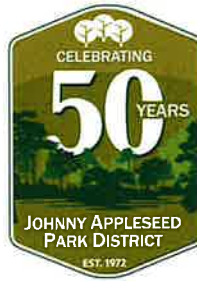
Looking back over this past year we have accomplished many projects and opened new avenues to explore innovation within the mission of the Park District. We accomplished the opening of two new playgrounds (Ottawa Metro Park and Kendrick Woods). We updated all three shelters at Kendrick Woods to aid in maintenance but also to give them an uplifting look. We moved into our new park office facility. We had great programs, such as Meet the WILD, Walking Through Autumn, and a plethora of school aged programs. We had our first Apple

All these accomplishments throughout the year are important but we continue to ask ourselves...how can we continue to build on the momentum we currently have? This next year (and next decade) are important to the future of our organization. We are committed to staying within our means of providing the best possible experiences for everyone in a safe, efficient, and caring way, while still being innovative and looking to new ventures with a fresh perspective. Its an exciting time to visit your parks! Like I mentioned last month, we will be conducting surveys to formulate our strategic plan moving into our levy year and the spring of 2023. These surveys are important because they help tell the story of the projects and successes that you want me to write about over the next decade. So, keep your eye out for this information and as always, your feedback is welcomed.

Yours in servant leadership,

Tyler Black  
Executive Director

# Thank You For 50 Great Years!



We want to take an opportunity to thank EVERYONE for their support over this year and for celebrating our 50<sup>th</sup> anniversary with us. It was a special year of planning, organizing, celebrating, reflecting, dreaming, and ultimately accomplishing the grand idea of celebrating 50 years. Its not every year we get to celebrate something so special!

We took time to reflect on the hard work, dedication, and sacrifice of those that came before us, whether it be commissioners, staff, volunteers, or supporters. The work they did propelled the Park District into its next 50 years. We had a great celebration on Saturday, June 25<sup>th</sup> at Ottawa Metro Park with a variety of family friendly activities, including some of the best young fishermen/women the swim beach has ever seen!

We encourage you to continue to utilize the parks in a way that challenges you to something new. Whether the 50-mile trail challenge helped you get outside more often or our conservation initiative at the Evan's Arboretum sparked your interest in trees and the natural world. We want to be a constant encouragement to you and those you care about. Come with us on our mission of conserving the natural resources of Allen County for future generations.



50th Anniversary—Fishing Derby



50th Anniversary—Native Plant Give-Away



50th Anniversary—Live Raptor Program



50th Anniversary Celebration - Nashville Crush Performance



## Thank You Apple Festival Sponsors

A special thank you to our 2022 Apple Festival Sponsors for making Apple Festival a great success!

### PLATINUM SPONSORS



### GOLD SPONSORS



### SILVER SPONSORS



### BRONZE SPONSORS



# 50 Mile Challenge

Celebrating the 50th Anniversary of the Park District, participants were challenged to walk or run 50 miles in the parks between April 1 through September 1.



Celebrating the 50th Anniversary of the Park District participants were challenged to walk or run 50 miles in the parks between April 1 through September 1. Participants logged their miles on a trail log and when completed submitted their log sheet into the Park District office. Over 13,463 miles were walked or ran by 235 participants.

A special thank you to all of the donors of prizes and for making the 50 Mile Challenge a great success!

### **Dayton Dragon Tickets**

Ashley Suever

### **OSU Tickets**

Jim Miller

### **P & G Basket**

Mark Putnam

### **Trekking Poles**

Tracy Campbell

### **Toledo Zoo Tickets**

Jerry Rex

### **Skyline Gift Card**

Robin Lammers, Roy Tordiff,

Joseph Trostle

### **Captain D's Gift Card**

Sharon Heising, Mary Ina Hooley,

Vickie Lee, Brian Martsteller,

Bob Shenk

### **Happy Daz Gift Card**

John Burky, Forrest Clingerman,

Barb Conrad, Dennis Core,

Tony Smith

### **Arby's Gift Card**

Diane Binkley, Terry Lammers,

Matt Miller, Ken Skoneiczny,

Scott Stimmel

### **McDonalds Gift Card**

Randy Conrad, Gary Mullins,

Leah Sanderson, Gary Selhorst,

Barbara Stump

### **Kewpee Gift Card**

Bruce Binkley, Mel Klima,

Megan Koehlinger, Dave Moreo,

Scott Siatkowsky

## Volunteering Opportunities

Join our Metroparks Volunteer Program and make a difference in the community! Young, old, or in between, all of our volunteers have something great to offer! Your dedication and hard work will not only bring your satisfaction, but will support the efforts and goals of the Park District as well! There are no minimum hours needed to volunteer.

If you are interested in volunteering please complete the Volunteer Enrollment Form on our website and return to:

volunteers@jampd.com or mail to the Park District office, 1682 Slabtown Road, Lima, OH 45801.

### *Opportunities*

- Elementary School Field Trips (Park District offers training)
- Nature trail guiding (Park District offers training)
- Wildlife Monitoring - Bird Feeders, Butterflies, Wildflowers, Bluebirds, Purple Martins
- Pioneer Skills Demonstrations
- Trail Monitors
- Festivals
- Photography
- Land Management



# Winter Programs

December, January, February

If program description indicates registration required, please register online at [jampd.com](http://jampd.com) or by calling 419-221-1232.

## PARKS LEGEND

ACF	Allen County Farm Park
ATA	Antibus Trail Access
AR	Agerter Road River Access
CTA	Cottonwood Trail Access
DC	Deep Cut Historical Park
FA	Fort Amanda Park
HP	Heritage Park
HR	Haver Ridge
HWMP	Hermon Woodlands Metro Park
KW	Kendrick Woods
LBS	Lippincott Bird Sanctuary
LHF	Lauer Historical Farm
MEEC	McElroy Environmental Education Center
MMP	Motter Metro Park
MTB	McLean Teddy Bear Park
OMP	Ottawa Metro Park
OMP/ AMP	Ottawa Metro Park Amphitheater

## December

### NATURE PALS: WINTER EVERGREENS

Thurs., Dec. 1 - 10 am or 1 pm - MEEC  
Children ages 3-5 and their adult companion are welcome to join us as we explore evergreen trees through crafts, hands-on activities, and a hike. Please dress appropriately to be outdoors. Register by Nov. 29.

### STORIES IN THE WOODS

Sun. Dec. 4 - 1:30 pm—HWMP

Children and their adult companion are invited to join us as we read a short story in the woods, take a hike, and make a craft to understand more about the book. Come dressed appropriately to spend as much time outdoors. Register by Dec. 2.

### TRI-MORaine AUDUBON SOCIETY - PHEASANTS FOREVER

Tues., Dec. 6 - 7:30 pm - Visitor Center at OSU Lima

Join the Tri-moraine Audubon Society to learn from Jeff Carlson a biologist working with the group Pheasants Forever. His work covers Allen, Paulding, Putnam, and Van Wert counties. Pheasants Forever is interested in much more than preserving Pheasants for hunting. Jeff will speak to us about habitat conservation and how legal hunting of Pheasants is not driving these pretty birds to extinction.

### DIY NATURE- CONSTELLATION PICTURES

Tues., Dec. 13 - 7 pm - MEEC

Learn about the constellations in the night sky and the stories that are behind them. We'll then create a constellation picture that can light up and take it home. No need to dress for the weather, we'll be indoors for the entire program. Register by Dec 9.



### MCELROY ENVIRONMENTAL CENTER OPEN HOUSE

Sun., Dec. 18 - 1 pm to 3 pm- MEEC

Join us in celebrating a tremendous partnership with Dot's Pet Center (*see article*) as we officially reveal new displays for our education animals! Experience the McElroy Environmental Education Center as you have never seen it before - animals, displays, activities, and more! Come anytime between 1 pm and 3 pm, no registration required.

### SUNRISE HIKE

Wed., Dec. 21 - 7:30 am - KW/CTA

Celebrate the shortest day of the year with a hike in the largest and one of the most beautiful parks! Marking the start of winter, the winter solstice means longer days ahead as our part of the earth tilts back toward the warmth of the sun. We'll meet at the Cottonwood Trail Access, part of Kendrick Woods, and take a trail that overlooks the river as the sun breaks the horizon. Be prepared for the weather and ground conditions. Register by Dec. 20.



Photo courtesy of Isaiah Hodges

## JANUARY

### NEW YEAR HIKE

Sat., Jan. 7 - 10 am - KW

Unwind, recharge, or maybe get a head start on your resolutions as you begin the year on the right foot. Join a naturalist for a brisk hike in the peace and quiet of Allen County's woodland gem, Kendrick Woods. Hot chocolate and tea will be provided. Register by Jan. 6.

### STORIES IN THE WOODS

Sun., Jan. 8 - 1:30 pm - KW

Children and their adult companion are invited to join us as we read a short story in the woods and take a hike and make a craft to understand more about the book. Come dressed appropriately to spend as much time outdoors. Register by Jan. 6.



### NATURE PALS: IT'S "SNOW" COLD OUTSIDE

Thurs., Jan. 12 - 10 am OR 1 pm - MEEC

Children ages 3-5 and their adult companion are welcome to join us to explore the wonderful world of snow. We will spend the beginning of our class indoors and then will, hopefully, head outside for a hike through the snow. Please dress appropriately for both indoor and outdoor activities. Register by January 10.

### A YEAR IN THE LIFE . . .

Thurs., Jan. 12 - 6:30 pm - MEEC

Enjoy a visual journey through nature's seasonal progressions at the Park District. We'll be amazed at the vitality of spring, the diversity of summer, the beauty of fall, and the majesty of winter. Landscape, plants, animals, it's all on display! Register by Jan 11.

### HOMESCHOOL ENRICHMENT CLASS - ORIENTEERING

Fri., Jan. 20 - 10 am - HP

Homeschool students earn how to use a compass and what it means to put red in the shed. Find out if you can navigate through the orienteering course while equipped with a map and compass. Map, compass, and instructions provided. Be prepared for the weather. Register by Jan. 19.

### EXPLORE S'MORE AT HERMON WOODLANDS

Tues., Jan. 24 - 6:30 pm - HWMP

Families can hike with a naturalist and explore a different park. Interact with other families while playing games, hearing stories, or singing songs and end the night with s'mores around a campfire. Register by Jan 23.



## FEBRUARY

### NATURE PALS: KNOCK, KNOCK— WHOOO'S THERE?

Thurs., Feb. 2 - 10 am OR 1 pm—  
MEEC

Whooo doesn't love owls?! Children ages 3-5 and their adult companion are invited to learn about owls through hands-on activities and stories. Be prepared for a short hike in the woods. Register by January 31.



Photo Courtesy of Dan Hodges

### MEEC OPEN HOUSE

Fri., Feb. 3 - 3:30 pm to 5:30 pm -  
MEEC

Experience the McElroy Environmental Education Center as you have never seen it before - animals, displays, activities, and more! Come anytime between 3:30 and 5:30 pm, no registration required.

### WINTER WALK

Sat., Feb. 4 - 9 am - HR

Experience nature in winter with a hike at beautiful Haver Ridge Metro Park. Be prepared for the weather and ground conditions. Haver Ridge offers an approximately 1-mile moderate trail. Register by Feb. 3.

### STORIES IN THE WOODS

Sun., Feb. 5 - 1:30 pm - HP

Children and their adult companion are invited to join us as we read a short story in the woods and take a hike and make a craft to understand more about the book. Come dressed appropriately to be outdoors. Register by Feb. 3.



### TRI-MORAINÉ AUDUBON SOCIETY

Tues., Feb. 7 - 7:30 pm - Visitor Center at OSU Lima

Join the Tri-moraine Audubon Society to learn about the Black Swamp Bird Observatory, which is celebrating its 30th anniversary this year. This important refuge is located at the entrance of the Magee Marsh Wildlife Area near Oak Harbor, Ohio. Becca Mathews of Black Swamp Bird Observatory will be updating us on the latest news there, highlighting programs and opportunities there. Migratory birds moving through the area, diversity of species, wind turbines and birds, and bird disease are some of the topics we can explore.



### INTRO TO NATURE JOURNALING

Tues., Feb. 16 - 6:30 pm - MEEC

Nature journaling is a great way to be present in nature, appreciate and record it. Consisting of sketches, paintings, notes, and descriptions, nature journaling offers an opportunity to try to capture a moment and recall observations that otherwise would be forgotten. And the great thing is, it's for everyone! This session will offer a brief introduction and some tools to get you started. Register by Feb. 14. Limited materials available for a \$10 fee.

### GREAT BACKYARD BIRD COUNT

Sat., Feb. 18 - 10 am - MEEC

The Great Backyard Bird Count (GBBC) is a free, fun, and easy event that engages bird watchers of all ages in counting birds to create a real-time snapshot of bird populations. Start with a brief presentation on bird ID and then you can relax and observe birds at the feeders from the comfort of the indoors. If you're up for it, we'll take a hike and observe birds in the woods as well. Coffee, tea, and a limited number of binoculars will be provided. Register by Feb. 17.



Photo Courtesy of Kathy McClintock

### EXPLORE S'MORE AT TEDDY BEAR PARK

Tues., Feb. 21 - 6:30 pm - MTB

Families can hike with a naturalist and explore a different park. Interact with other families while playing games, hearing stories, or singing songs and end the night with s'mores around a campfire. Register by Feb. 20.

### ORIENTEERING

Sat., Feb. 25 - 10 am - HP

Learn how to use a compass and what it means to put red in the shed. Find out if you can navigate through the orienteering course while equipped with a map and compass. Map, compass, and instructions provided. Be prepared for the weather. Register by Feb. 24.

## SCOUTING PROGRAMS

The Johnny Appleseed Park District is happy to help you and your scouts complete requirements for badges, achievements and electives. Below is a list of what programs we offer. Please contact the naturalists at 419-221-1232 to schedule a program.

#### Cub Scouts & Webelos

**Tiger Adventure:** Backyard Jungle / Tigers in the Wild

**Wolf Adventure:** Paws on the Path

**Bear Adventure:** Fur, Feathers, and Ferns

**Bear Elective Adventure:** A Bear Goes Fishing

**Webelos/Arrow of Light Elective Adventure:** Into the Wild / Into the Woods / Earth Rocks/Walkabout

#### Boy Scouts

The JAMPD naturalists are merit badge counselors in: Bird Study, Mammal Study, Insect Study, Reptile & Amphibian Study, Nature, Hiking, Environmental Science, Fish and Wildlife Management, Sustainability

#### Girl Scouts

**Daisies:** Rose Petal, Clover Petal

**Brownies:** Bugs, Senses, Hiker

**Juniors:** Flowers, Animal Habitats

**Cadettes:** Trees, Night Owl,

Trailblazing



# Park Volunteers Honored



L-R; Sue Lutz, Donna Creamer, Doreen Martin, Olivia Smedley, Ann Warner, Paul Warner, Michael Gentry

Park District Volunteers were honored on Thursday, August 11 at the 2022 Volunteer Appreciation Dinner held at the Park District office conference room. Dinner was catered by Stites and paid for through the Park District Foundation of Allen County. Special recognition was extended to the following volunteers who reached "milestone" years of service.

**5 Year Award** - Donna Creamer, Judy Fanaff, Mike Fanaff, Ryan Johnson, Corrine Piper, Doreen Martin, Sharon Smith, Olivia

Smedley, Ann Warner, Paul Warner.

**10 Year Award** - Milo Johns

**22 Year Award** - Michael Gentry

**35 Year Award** - Charlotte Apfelbeck

**40 Year Award** - Sue Lutz

If you would like to join this amazing team of volunteers, please contact the Park District office at 419-221-1232. No prior experience is needed, just the desire to make a difference in the community and meet new and interesting people in a fun environment.

## 2023 Friends of the Parks Membership

Friends of the Parks is an organization associated with the Johnny Appleseed Metropolitan Park District. Donations from Friends of the Parks enable the Park District to ensure the continuance of environmental education programming, purchase facilities for the parks, and help protect the natural resources of Allen County. Your membership entitles you to a discount on shelter house reservations.

If you would like to renew your membership for 2023 or join Friends of the Parks, please use the envelope provided in the Park District Newsletter.

**Support Your Park District . . .  
Join Friends of the Parks!**

## Park District Foundation of Allen County

**Just a reminder!** For those that are approaching the age of 70 1/2, the IRS requires that you take a Minimum Required Distribution from your IRA's. Consider the Park District Foundation of Allen County as an annual beneficiary. Your gift will be used in an efficient and effective way to benefit the citizens of Allen County.

## Donations

### In memory of

Mary Lou Bryan

Tajudee Oladele Ashafa

Albert "Sunny" Dickerson III

Alice Cummans Cooley

Jackie Light

Dillion W Staas

Wanda Miller

Trish Nunley

Janet Rossfeld

### In honor of

David Steiner

Julia Nunley & Roderick Jordan





# 2022 Friends Of The Parks



These 2022 Friends of the Park memberships made additional programs, events, supplies, equipment, and exhibits possible for the people of Allen County. Thank you!

## FRIENDS

Teresa Adams  
Vivian Adams  
Dan & Barbara Arnett  
Janeen Aschemeier  
Bill & Pam Askins  
Greg Bates & Kathy Metcalf  
Stephen & Avis Birkmeier  
Jency & Karen Brown  
Dennis Bucholtz  
Gary & Susie Closson  
Keith Cunningham  
Joseph Dapore  
Jane Doty  
Chuck & Patty Dunahay  
Rita Essick  
Earl & Joanne Fair  
Eileen Falk  
Vernon & Judith Fischer  
Connie & Dean French  
Fred & Shauna Getz  
Tom & Donna Greenland  
Ruth Grone  
Joan Hageman  
Patricia Hill  
Kevin & Barbara Hooley  
Milena & Fred Howald  
Judy Jacomet  
Vickie A Kahle  
Sandy Kennedy  
Phyllis Koch  
Paul & Ruby Kreher  
Stan & Marie Lawrence  
Lonnie & Linda Lehman  
Brian & Anne Levers  
Christel E Liggett  
Robert & Christine Looser  
Marlene McDaniel  
Ernest Miller  
Sharon Moening  
Patricia Morris  
Sally L Murphy  
Norma Page  
Lisa Ramey  
Dee Redman  
Linda Reif  
Ronald & Joyce Roeder  
Beverly Shade  
Susan E Smith

Yvonne Shook  
Dr. & Mrs. Jack Spratt  
Jim & Shirley Steed  
Shawn & Jane Stevens  
Shirley Strayer  
Penny L Walters  
Hope Wilkes  
Debra Williams  
John & Nancy Young

## FAMILY

Doug & Linda Adams  
Dale & Nancy Alkire  
Dale & Elaine Altstaetter  
Tom & Kathy Arnold  
Gary Bayliss  
Jerry & Lois Bertram  
Jerry & Helen Bibler  
Brandon & Jenny Blaine  
Neal & Allison Brady  
Gloria & Larry Brunk  
Betty Bushong  
Dr. & Mrs. Kenneth Clemens  
Dwayne & Patty Dawson  
Ken & Sondra Dreitzler  
Mark & Renee Droll  
Thomas & Diana Eversole  
Barbara Fisher  
Michael & Linda Gentry  
Vince & Shari Gilbreath  
Doug & Suzanne Graham  
Bob & Deb Hadding  
Myrna & Lyle Heller  
Ron & Cathy Huber  
J. Eric Juterbock  
John & Priscilla Keller  
Gregory & Laura Kessen  
Bob & Jo Kindel  
David & Ruth Kinder  
John & Sandy Kivimaki  
Margery Lafollette  
David & Lynda Makley  
Jerry & Vickie Martin  
Bill & Mary Massa  
Barbara Mayer  
Brian & Katie Mears  
Stephen Miller  
Carol Mox  
Hank & Ginny Otto  
Don & Peggy Patton  
James P. Patrick  
John & Jenny Pilarowski

Errol & Bonnie Plate  
Harold Plaughter  
Tim & Alecia Reimund  
Kay Schosker  
Greg & Jackie Taylor  
John & Carol Thomas  
Beverly J Thompson  
Jill Vogelgesang  
Elizabeth Vogt  
Bob & Joann Walker  
Catherine Ward  
Paul & Ann Warner  
William & Charlotte Williams  
Joe & Judy Wilson  
Amanda L Wischmeyer  
Donald & Ruth Witter  
Timothy J. Wolff  
Kelli & Terry Wooddell

## SUPPORTING

David Adams  
Vernon & Cherie Adkins  
Robert & Joanne Antibus  
Beth Arbeit  
Gerald & Beverly Aska  
Paul & Kay Assenheimer  
David & Beverly Beery  
Randy & Sandy Bindel  
Evelyn Black  
Radek & Marcy Bolek  
Lois Boroff  
William & Teresa Bowersock  
Bowman's Fine Cabinetry, Inc.  
Kevin & Cindy Bruin  
Charles & Beverly Conkle  
Phyllis & Michael Conley  
John Corey  
Kevin & Donna Creamer  
Keith & Carol Cunningham  
Sharon Curl  
Russ & Anne Decker  
Steve & Myra Diepenbrock  
Alan & Mary Ann Draves  
James & Cindy Eaton  
Elida Machine & Tool  
Jim & Stephney Fess  
Bruce & Teresa Fuhrman  
Greg & Christine Gebolys  
Joseph & Jennifer Griffiths

Robert & Debra Guenther  
Matthew & Diana Hampshere  
Dave Harsh  
Janet Harshman  
Josephine Hartman  
Dr. & Mrs. Thomas Heckler  
Jim & Jan Heinrich  
John & Karen Heltman  
John & Diane Hoffman  
Steve & Maribeth Homan  
Susan Hubbell  
Gary Huffman  
David & Martha Hutchison  
Helen Ann Imbrock  
April & Mike Johns  
Jim & Eileen Jones  
Becky Kirchner  
Ruth C Kirchner  
Dale & Nancy Kohlrieser  
Herb & Karlyn Lauer  
Gloria Leech  
Jaye McCain  
Tom & Sonnie McColloch  
Ron & Kay McNutt  
Jim & Jan Meredith  
Marilyn & Ron Meyer  
Donna Michael  
Alan Mikesell  
Mike & Amy Mullen  
Northwest Flooring Gallery  
Robert Obermeyer  
Paul & Patricia Offenbacher  
Claude & Janet Paxson  
Quality Indoor Air Service  
Lois I Risser  
Judy Saine  
Thomas A Sarno  
Mark & Jan Schluneker  
Terry & Theresa Schnipke  
Scott & Nancy Siatkosky  
Spieles Nursery - Blooms  
Mark & Stephanie Spees  
Stephen & Peg Sterne  
Tim & Kathy Stuckey  
Bill Timmermeister & Deborah Davis  
Duc Duy Tran  
Tom Ahl Buick

Tri-Moraine Audubon Society  
Technicon Design Group  
Phil & Mary Ann Valentine  
Rob & Shari Waltz  
Janice Warnecke  
Lois Ann Warren  
Larry Webb & Marcia Rossfeld-Webb  
Kathleen A Wechta  
Norman Wehri  
Cristy J Wilker  
Lee & Gay Williams  
Carol Wright  
Charles Yeagle  
David & Barbara Young  
Jean A Zink

## ADVOCATE

Tom & Andrea Ahl  
Bobcat of Lima  
David & Elizabeth Entinghe  
Judith Evans  
Husky Energy  
INEOS Nitriles  
K & L Ready Mix  
Life Long Learning Institute  
Sharon L Smith  
Webb Insurance Agency  
Bruce & Karla Wells  
Neil & Betsy Winget  
Eric & Catherine Wiechart

## PATRON

Charlotte Apfelbeck  
Bob & Carol Bertrand  
Duff Family Foundation  
Thora O Davis  
Jerry Johnson  
Lima Millwork, Inc  
Robert & Joy Moon  
Nutrien  
Procter & Gamble Mfg Co  
Raabe Ford-Lincoln  
Nancy Rudolph  
Steve Myers Service, Inc  
Tri-Moraine Audubon Society  
Seth & Joy Troyer  
Jane L Urish

# Naturalist Notebook

## “Partnerships”



We are very grateful for the partnerships!

Here at the Park District, we are very grateful for the partnerships we have been a part of over the last 50 years. I can't speak to many relationships that occurred before my time or outside of my scope, but I can say that I am continually impressed by the engagement and support of members of our community. There is a lot that happens here at the Park District, from donuts at our fall hiking series to the Rotary Riverwalk, which are a result of impassioned individuals and organizations that want to make a difference in Allen County.

In my role I've seen many of these partnerships spawn truly wonderful projects that have had a huge role in helping us connect people with nature. We've partnered with the Allen Soil and Water Conservation District with many school education programs, including 5<sup>th</sup> grade field trips and the 2022 Allen County Fair. The Tri-Moraine Audubon Society helped us celebrate our 50<sup>th</sup> anniversary by bringing in raptors (including a Bald Eagle) and butterflies as well as sponsoring a native plant giveaway! (They gave away over 500 plants, by the way!). Be sure to stop downtown this month and see ArtSpace Lima's display of our Nature Photography Contest, sponsored by Alloway Environmental Testing. And these are just a fraction of what our partners can do.

Partnerships like these and many

more mean a great deal, on at least two counts. First, these projects and programs are often impossible without the support of great partners. Second, it helps remind us that other people believe in what we're doing, too. I know that I'm here at the Parks because I believe what we do is important. It is extremely encouraging to see other people, not only doing good things on their own, but wanting to participate in what the Park is doing and help us do more.

One partner we would like to highlight specifically this winter is Dot's Pet Center. Dot's contribution to the display of our Education Animals in the McElroy Environmental Education Center (MEEC) is tremendous and will serve the care and housing of our education animals for a long time. Dot's has been around over 30 years and is Lima's only locally owned, locally operated full-line pet store. Their mission – to provide the knowledge and opportunity to fulfill your pet's needs – is different from the Park District's, but I would argue that is not contrary. A big part of the Park District's mission and vision is *to Connect People With Nature*, and much of that connection comes from hands-on experiences with live animals, often as pets (I definitely speak from experience!). The educational benefit of having pets is invaluable. Having a partner that ethically sources animals and em-

phasizes exceptional care is particularly important. So, when you come to see our Gray Rat Snake, our Common Snapping Turtle, or our Gray Tree Frog, and *reeeeally* want one just like it, you can learn about similar pets and how to properly care for them.

“When can I see them?” you might wonder. Well, come and experience our brand-new educational animal displays during our open house on December 18<sup>th</sup>! Learn how these animals are used and cared for and take a tour of the newly revamped McElroy Environmental Education Center.

You can see some images of this partnership on the MEEC page on our website. Visit [dotspet-center.com](http://dotspet-center.com) to learn more about Dot's and what they are doing for the community.

There is no time like right now to join forces and collaborate for the good of both the people and the environment around us. I am grateful that we are doing just that with our partners.

*Dan Hodges*

Environmental Education  
Supervisor

# Nature Photography Contest Winners

We are pleased to announce the winners of our Annual Nature Photography Contest. The contest was judged by professional photographer Jamie Cunningham of Sabrewing Nature Tours.

Thank you to all of our participants and congratulations to all the winners. There were 315 photos submitted for this year's contest. All of the winning photos can be viewed on our website [johnnyappleseedparks.com](http://johnnyappleseedparks.com)

A special thank you to Alloway Environmental Testing Services for their continued sponsorship. Also, thank you to Art Space Lima and the Lima/Allen County Civic and Convention Center for displaying the winning photos.

**Best of Show** - Julie Lieurance

**Youth Landscape**

- 1st place - Abram Hodges
- 2nd place - Grant Daniels
- 3rd place - Andrew Hohenbrink

**Youth Nature - Flora**

- 1st place - Sallie Snyder
- 2nd place - William Davis
- 3rd place - Owen Irving

**Youth Nature - Fauna**

- 1st place - William Davis
- 2nd place - Andrew Hohenbrink
- 3rd place - Jackson Daniels

**Youth Parks Potpourri**

- 1st place - Andrew Hohenbrink
- 2nd place - Lucas Daniels
- 3rd place - Owen Irving

**Adult Landscape**

- 1st place - James Barnes
- 2nd place - James Barnes
- 3rd place - Barb Hohenbrink

**Adult Nature - Flora**

- 1st place - Kenny Smith
- 2nd place - James Barnes
- 3rd place - Barb Hohenbrink

**Adult Nature - Fauna**

- 1st place - Brad Crawford
- 2nd place - Kira Davis
- 3rd place - Rebecca Pescosolido

**Adult Parks Potpourri**

- 1st place - Geraldine Snyder
- 2nd place - Bobbie Dawson
- 3rd place - Rebecca Pescosolido



**Best of Show**  
Julie Lieurance



1st Place - Adult - Landscape  
James Barnes



1st Place - Adult - Flora  
Kenny Smith



1st Place - Adult - Fauna  
Brad Crawford

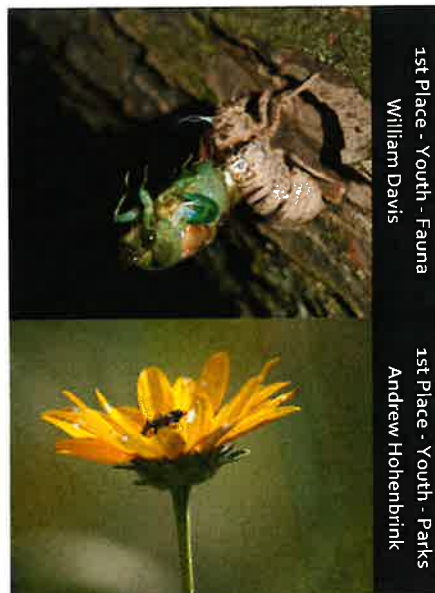


1st Place - Adult - Parks Potpourri  
Geraldine Snyder



1st Place - Youth - Landscape  
Abram Hodges

1st Place - Youth - Flora  
Sallie Snyder



1st Place - Youth - Fauna  
William Davis

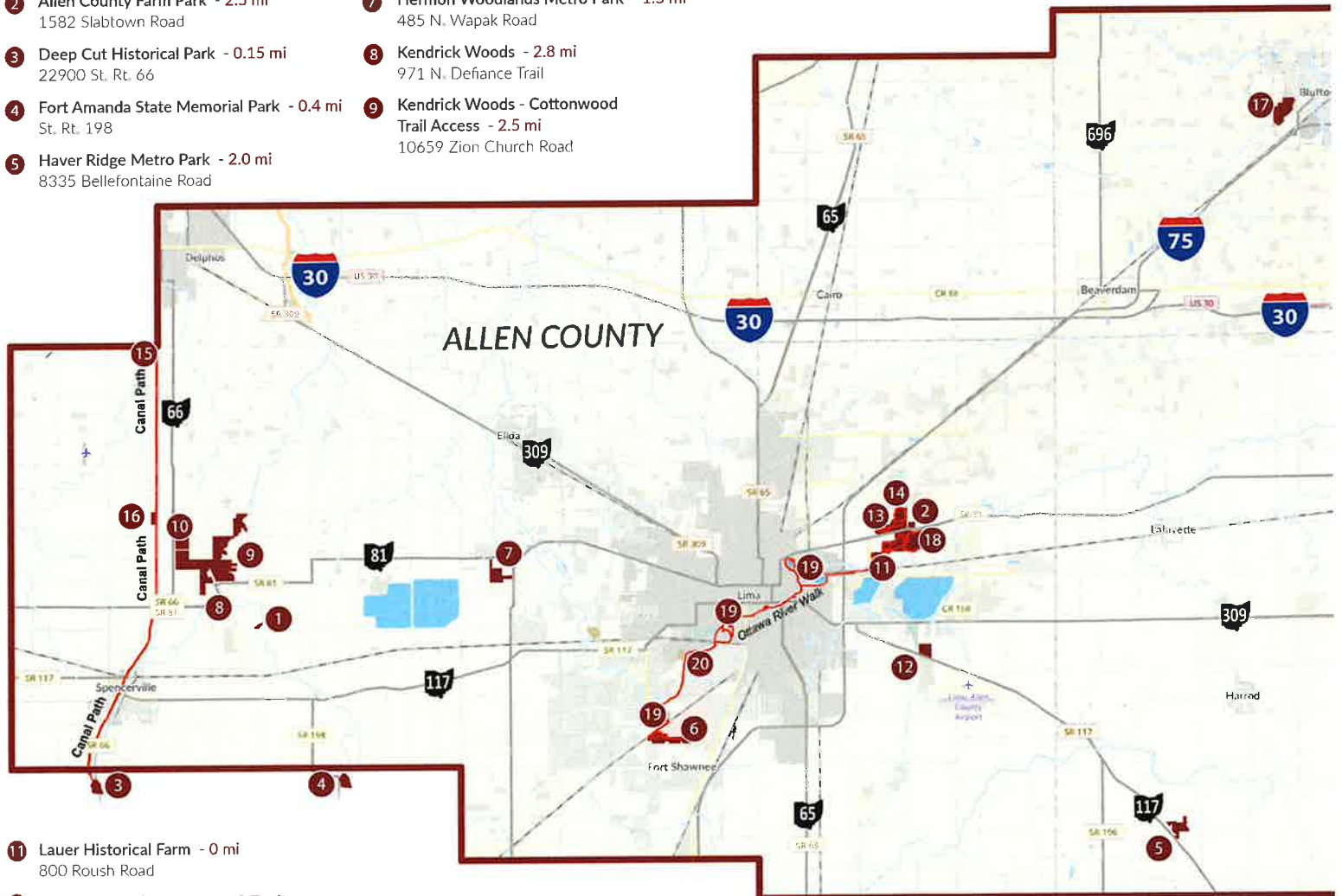
1st Place - Youth - Parks  
Andrew Hohenbrink



Phone: 419-221-1232  
eMail - jampd@jampd.com  
JohnnyAppleseedParks.com

To be placed on The Cider Press mailing list,  
please call the Park District Office.

- |   |   |  |
|---|---|--|
| <b>1</b> Agerter Road River Access - 0 mi<br>16410 Agerter Road     | <b>6</b> Heritage Park - 3.8 mi<br>2092 Reed Road (West Ent) 1772 Reed Road (East Ent)  | <b>10</b> Kendrick Woods - Evans Archery Range - 0 mi<br>1376 N. St. Mary's Road |
| <b>2</b> Allen County Farm Park - 2.5 mi<br>1582 Slabtown Road      | <b>7</b> Hermon Woodlands Metro Park - 1.5 mi<br>485 N. Wapak Road                      |  |
| <b>3</b> Deep Cut Historical Park - 0.15 mi<br>22900 St. Rt. 66     | <b>8</b> Kendrick Woods - 2.8 mi<br>971 N. Defiance Trail                               |  |
| <b>4</b> Fort Amanda State Memorial Park - 0.4 mi<br>St. Rt. 198    | <b>9</b> Kendrick Woods - Cottonwood<br>Trail Access - 2.5 mi<br>10659 Zion Church Road |  |
| <b>5</b> Haver Ridge Metro Park - 2.0 mi<br>8335 Bellefontaine Road |   |  |



- |  |  |  |
|--|--|--|
| <b>11</b> Lauer Historical Farm - 0 mi<br>800 Roush Road                       | <b>16</b> Robert K. Antibus Trail Access - 0.20 mi<br>12395 Zion Church Road       | <b>19</b> Rotary Riverwalk/Ottawa River Bikeway - 4.6+ mi<br>from Heritage Park to Ottawa Metro Park |
| <b>12</b> Lippincott Bird Sanctuary - 0.7 mi<br>3093 Bellefontaine Road        | <b>17</b> Motter Metro Park - 2.0 mi<br>10740 Columbus Grove Bluffton Rd, Bluffton | <b>20</b> Veterans Freedom Flag Monument - 0 mi<br>1191 Buckeye Road                                 |
| <b>13</b> McElroy Environmental Education Center - 0 mi<br>2355 Ada Road       | <b>18</b> Ottawa Metro Park - 5.0 mi<br>2632 Ada Road                              |  |
| <b>14</b> McLean Teddy Bear Park - 2.25 mi<br>2004 N. Dixie Hwy.               |  |  |
| <b>15</b> Miami and Erie Canal Towpath Trail - 12.5 mi<br>Miami and Erie Canal |  |  |